



# BANGOR WATER

## 2016 Water Quality Report

Sixty years ago, Bangor Water officials chose Floods Pond to become the new source of supply based on its superb water quality. The same mission of delivering this excellent product to your tap continues today!

This 2016 Water Quality Report summarizes the quality of drinking water we supplied to your home, school, or business. Originating from the remote and forested watershed of Floods Pond in Otis, Maine, this high quality drinking water is well protected from the start. We further ensure safety along the way directly to your tap!

Cost-effective treatment is applied to make this clean surface water into safe drinking water for you and your family.

What is important to you is important to us, and we are able to deliver the best possible water at a very affordable rate.

Every time you turn on your tap, we want you to feel this same sense of pride and peace of mind. Please call (207) 947- 4516 ext. 409 if you have any questions, comments, or concerns.



As always, thank you for your support!

## We provide you with exceptional quality from source to tap!



For nearly 60 years now, Floods Pond has provided a consistent supply of water so clean and clear that it does not need to be filtered. Water from this surface supply is made safe to drink using state-of-the-art ozone and ultraviolet light disinfection systems. Chloramines are added to provide long-term protection throughout the distribution system pipes. The treatment process finishes with pH adjustment for corrosion control and the addition of a small amount of fluoride for dental health. It is important to note that lead is **not** found in Floods Pond. Likewise, lead is **not** introduced during treatment or distribution. The Bangor Water system does **not** have any lead service lines connecting homes, schools, or businesses to our water mains.

### Definitions

**AL:** Action Level: The concentration of a contaminant which, if exceeded, triggers treatment or other requirements which a water system must follow. To meet compliance, 90% of sample results must be at or below the Action Level.

**LRAA:** Locational Running Annual Average: An annual average is calculated at each monitoring site.

**MCL:** Maximum Contaminant Level: The highest level of a contaminant that is allowed in drinking water.

**MCLG:** Maximum Contaminant Level Goal: The level of a contaminant in drinking water below which there is no known or expected risk to health.

**mg/L:** Milligrams per liter or parts per million (ppm).

**MRDL:** Maximum Residual Disinfectant Level: The highest level of a disinfectant allowed in drinking water.

**MRDLG:** Maximum Residual Disinfectant Level Goal: The level of a drinking water disinfectant below which there is no known or expected risk to health.

**NTU:** Nephelometric Turbidity Unit: A measure of the amount of light scattered by suspended particles in a water sample.

**ug/L:** Micrograms per liter or parts per billion (ppb).

### Cryptosporidium Monitoring

Part of source water monitoring includes testing for an infectious organism known as *Cryptosporidium*. To date, this organism has never been found in Floods Pond, but we have ultraviolet light treatment capable of inactivating *Cryptosporidium* if ever present. Another two year round of monthly source water *Cryptosporidium* testing began in October 2016 and will continue through September 2018.

### Waivers Granted Due to Exceptional Source Water Quality Keep Drinking Water Rates Affordable!

In the 25 years since applying for and receiving a filtration waiver for Floods Pond, we have met and exceeded all of the source water monitoring requirements for maintaining this very special status. There are fewer than 60 unfiltered systems in the United States, and 8, including Floods Pond, are here in Maine. In comparison, filtration is required for the approximate 12,500 surface water supplies across the nation. Being unfiltered has saved rate payers significantly over the years. The estimated cost for a filtration plant to be built here all those years ago was 30 million dollars, and annual operating costs would have required additional funding. The source water protection plan we have for Floods Pond allows us to receive additional waivers as appropriate. Our most recent (three year) waiver for testing synthetic organic compounds, was granted in 2014 because potential industrial sources of SOCs are not found within a half mile radius of the water source.



## Low Risk of Contamination

The Maine Drinking Water Program has evaluated all public water supplies as part of their Source Water Assessment Program. Their report on Floods Pond concludes that the pond is at **low** risk of contamination. The Source Water Assessment for Floods Pond is available at the District's business office.

This background photograph of Floods Pond was taken at sunset in December 2016 as ice was forming for the winter.

## Your drinking water is tested from start to finish!

In 2016, your drinking water met or surpassed all state and federal drinking water quality requirements. Thanks to the pristine nature of Floods Pond, very few regulated compounds are found in the water before or after it is treated. Below is the full listing of regulated compounds found in 2016. Many are natural and are detected only at low levels. Please note that test results for lead and copper are determined in homes with copper pipes joined with lead solder. For a complete listing of all substances tested for, but not found in your drinking water, please visit our website, [www.bangorwater.org](http://www.bangorwater.org).



### 2016 Water Test Results Before Treatment

Compound	MCLG	MCL	Result <sup>1</sup>	Range	Source
Turbidity (NTU)	N/A	5	0.75	0.39 - 0.75	Suspended particles

### 2016 Water Test Results After Treatment

Disinfectant	MRDLG	MRDL	Result <sup>1</sup>	Range	Source
Chloramines (mg/L)	4	4	2.88	2.48 - 2.88	Water disinfectant

Compound	MCLG	MCL	Result <sup>1</sup>	Range	Source
Barium (mg/L)	2	2	0.0014	N/A	Erosion of natural deposits
Copper (mg/L) <sup>2</sup>	1.3	AL > 1.3	0.15	N/A	Corrosion of household plumbing
Fluoride (mg/L)	4	4	0.8	0.6 - 0.8	Additive for dental health
Haloacetic Acids (µg/L) <sup>3</sup>	N/A	60	30	12 - 58	Byproduct of water chlorination
Lead (µg/L) <sup>4</sup>	0	AL > 15	4.73	N/A	Corrosion of household plumbing
Trihalomethanes (µg/L) <sup>3</sup>	N/A	80	9.7	1.4 - 21.1	Byproduct of water chlorination
Uranium (µg/L)	0	30	0.5	N/A	Erosion of natural deposits

### Secondary Standards

These established limits protect aesthetic qualities in drinking water, and **do not** represent a health risk.

Compound	Result <sup>1</sup>	Limit
Chloride (mg/L)	5	250
Color (units)	6	15
Copper (mg/L)	0.0015	1
Hardness (mg/L)	5.70	500
Iron (µg/L)	not detected	300
Manganese (µg/L)	3.7	50
Silver (µg/L)	not detected	100
Sodium (mg/L)	12	100
Sulfate (mg/L)	2	250
Zinc (mg/L)	0.0012	5

#### Footnotes

- <sup>1</sup> Results shown represent the highest value obtained unless otherwise noted.
- <sup>2</sup> 90<sup>th</sup> percentile result, none of the 30 homes tested exceeded the copper action level.
- <sup>3</sup> Highest LRAA result from April 2015 - October 2016 and range of all 2016 results.
- <sup>4</sup> 90<sup>th</sup> percentile result, none of the 30 homes tested exceeded the lead action level.

## Health Information From EPA

Drinking water, including bottled water, may reasonably be expected to contain at least small amounts of some contaminants. The presence of contaminants does not necessarily indicate that water poses a health risk. More



information about contaminants and potential health effects can be obtained from the Environmental Protection Agency Safe Drinking Water Hotline at 1-800-426-4791. You may also direct questions to the Maine Department of Health and Human Services Drinking Water Program at (207) 287-2070.

Some people may be more vulnerable to contaminants in drinking water than the general population. Immuno-compromised persons, such as persons with cancer undergoing chemotherapy, persons who have undergone organ transplants, people with HIV/AIDS or other immune system disorders, some elderly, and infants can be particularly at risk from infections. These people should seek advice about drinking water from their health care providers. EPA/CDC guidelines on appropriate means to lessen the risk of infection by *Cryptosporidium* and other microbial contaminants are available from the Safe Drinking Water Hotline or online at <http://www.epa.gov/safewater/hotline/>.

information about contaminants and potential health effects can be obtained from the Environmental Protection Agency Safe Drinking Water Hotline at 1-800-426-4791. You may also direct questions to the Maine Department of Health and Human Services Drinking Water Program at (207) 287-2070.

## Knowing Where Lead Comes From

Lead is not found in Floods Pond; there is no lead in the water when it leaves the treatment facility; and the District uses piping and materials that do not add lead to the water. None of the homes in our system have a lead service line.

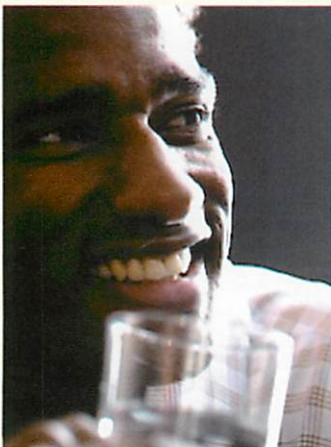
Since 1992, we have monitored homes known to have lead solder and other lead plumbing components. Results of our monitoring program guide our corrosion control treatment. The Bangor Water District is responsible for providing high quality drinking water, but cannot control the variety of materials used in internal home plumbing components. You can reduce your potential exposure to lead by replacing your household components containing lead with "lead-free" varieties.



**When water has been sitting unused for several hours, you can minimize any potential lead exposure simply by flushing your cold water tap for 2 to 3 minutes before using it for drinking or cooking.**

If present, elevated levels of lead can cause serious health problems, especially for pregnant women and young children. Lead in drinking water is primarily from materials and components associated with internal home plumbing.

If you are concerned about lead in your water, you may wish to have your water tested. Information on lead in drinking water, testing methods, and steps you can take to minimize exposure is available from the Safe Drinking Water Hotline or at <http://www.epa.gov/safewater/lead>.



## We Welcome Your Feedback

The Bangor Water District staff conducted a variety of activities related to water quality during 2016, and we encourage public comment on our efforts. If you wish to provide feedback, you can contact us:

- 1) by visiting our business office at 614 State St. in Bangor, ME, business hours are 7:00 a.m. - 3:30 p.m. Monday - Friday excluding holidays
- 2) by mail at P.O. Box 1129, Bangor, ME 04402-1129
- 3) online at [www.bangorwater.org](http://www.bangorwater.org)
- 4) by telephone at (207) 947-4516 ext. 409 for Dina Page, our Water Quality Manager, or by fax at (207) 947-5707
- 5) at the District's Board of Trustees meetings held at 614 State St. on the 3rd Tuesday of every month at 3:45 p.m.

**Again, thank you for your support!**