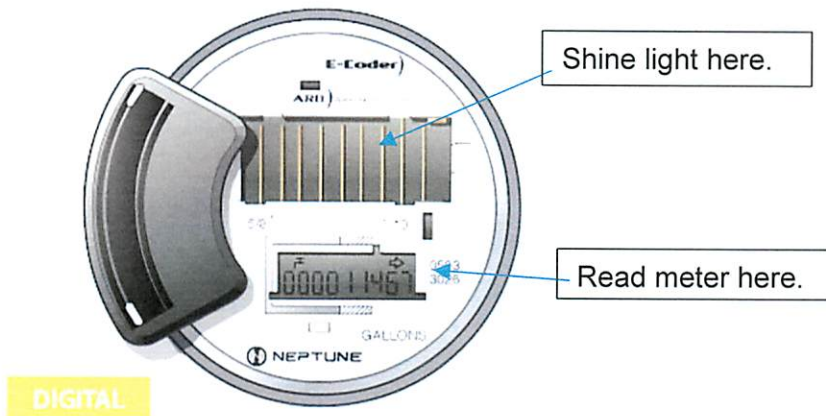


HOW DO I READ THE WATER METER?

More than 90 percent of our water meters show the meter reading on an electronic display (LCD). There needs to be sufficient light to activate the display, so you may need a flashlight.

The meter alternates between showing (flashing) the meter reading and the current flow rate.



Our meters measure water in hundred cubic feet (HCF). The meter reading is in full and partial HCF.

Meters read from left to right (like a car odometer). The four numbers farthest to the left are HCF; the numbers after that reflect tenths and hundredths of an HCF. The reading on this meter is 0000.11467. Once it has measured a full HCF, it will read 0001.00000.

If there is no water being used, the flow rate will show as 00000. Observe the flow rate reading for at least 10 flashes. If the number is greater than zero on any of the flashes, there is a continuous leak.

Some leaks are very slow and may not show as a continuous flow. In that case, pick a time when there will be no water use for at least six hours. Write down the reading on the meter at the start of the six hours, and then read the meter again in six hours. If the reading has changed while no water was being used, something in the building has a slow leak and is pulling water through the meter.